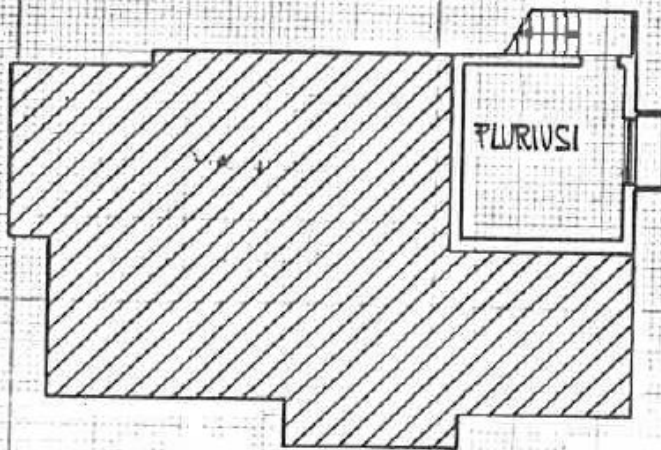
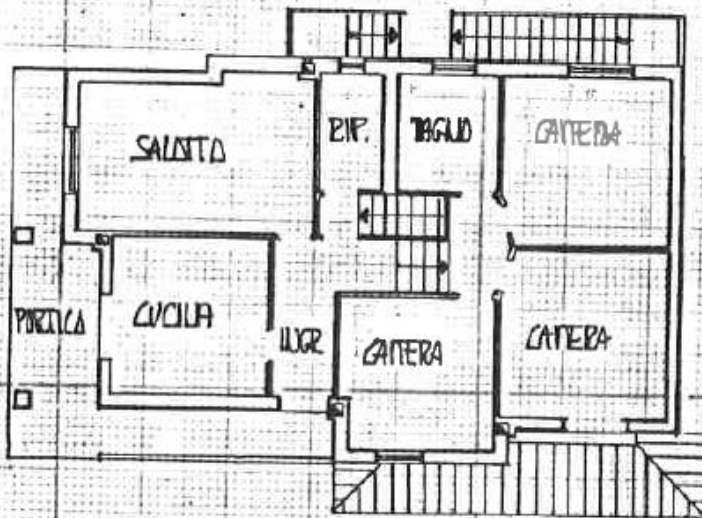
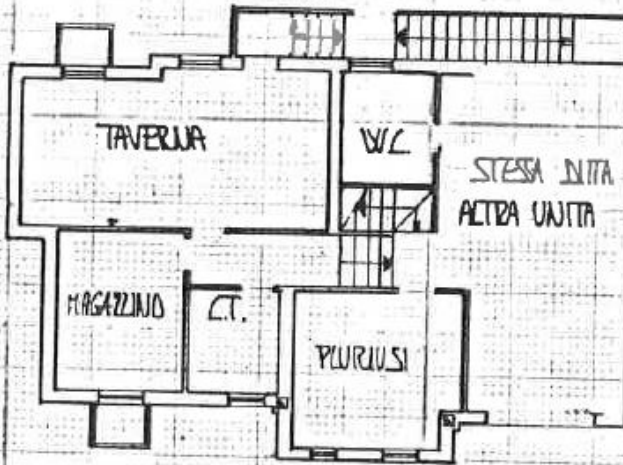


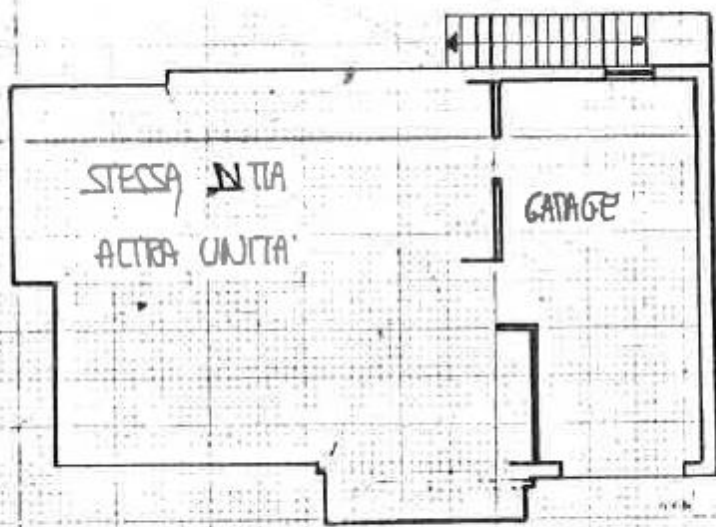
PIANTA PIANO INTERRATO (P.S1)
h = 2.10



PIANTA PIANO TERZA e SEMINTERRATO (PT e P.S)
h = 2.35



PIANTA PIANO PIAZZATO e PRIMO (PT e P1)
h = 2.70



PIANTA PIANO TERZA (P.T.)
h = 135